

Diagnosis report of 2014 BMW 525 Luxury Line



Car details

Color: Black	CO ₂ NEDC Emission: 133 g/km
Fuel type: Diesel	
Body type: Sedan	Gross Vehicle Weight (GVW): 2265 kg
Number of doors: 4	Engine size: 2.00 l
Number of seats: 5	Cylinders: 4
Mileage: 185 074 km	Power: 160 kw
VIN Code: WBA5C71050D820018	Fuel consumption: 4.70 l/100km
Gearbox: Automatic	Tire size: 245/40 - 19"
Drive type: Rear-Wheel Drive	Longo Stock ID: G820103
Longo Certified	

Car photos



Disclaimer

This report has been generated automatically using the information available in our systems and may not be fully comprehensive or complete. Automated translation technology was used in its preparation, and as a result, minor inaccuracies may occur. If you have any questions or if any part of the report is unclear, please do not hesitate to contact our sales team. They will be happy to assist you.

Diagnosis report of 2014 BMW 525 Luxury Line



Diagnosis details

Mileage on completion date: 185 074 km

Checked by Longo Shared Service certified diagnostics team: Eimantas A., Arnas S., Mindaugas G.

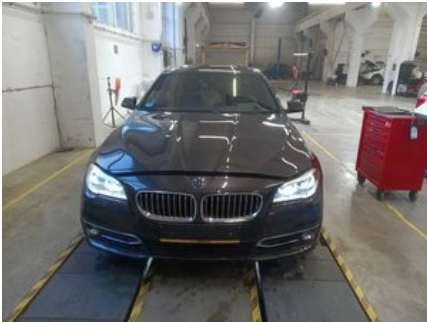
This vehicle has been inspected in accordance with the Longo 150-point checklist, covering the body exterior, interior, and mechanical condition. Based on the inspection performed and the information available at the time of assessment, no indications of involvement in major accidents were identified. Information regarding maintenance history and mandatory roadworthiness inspections is based on available documentation and records from the country of export. Please note that certain general wear and tear issues are considered acceptable and may not be repaired.

Summary of diagnosed issues

During the comprehensive diagnosis conducted by Longo, 17 issues were identified in the vehicle.

Interior	Exterior	Mechanical
✔ 3 issues identified	✔ 9 issues identified	✔ 5 issues identified

Diagnosis process



Interior

- ✔ **1. Front:** Steering Wheel - Condition



✔ **2. Inside: Armrest - Operation and Condition**

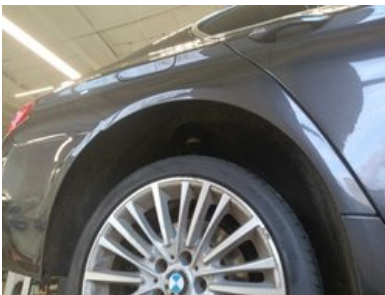


✔ **3. Doors: Trims - Condition**



Exterior

✔ **1. Side: Left and Right Side - Visual Damage and Scratches**



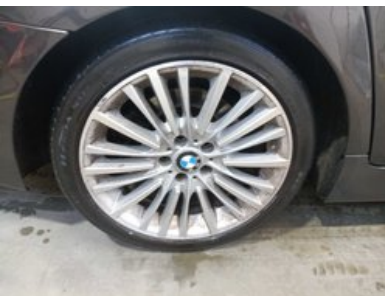
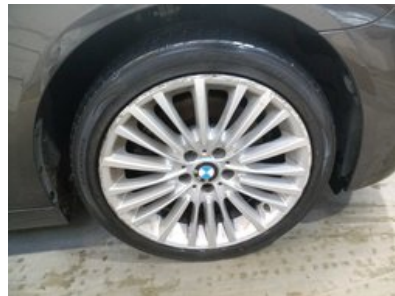
✔ **2. Side:** Left and Right Side - Visual Damage and Scratches



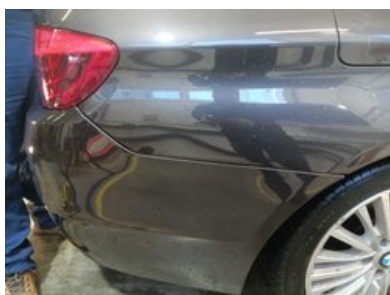
✔ **3. Side:** Left and Right Side - Visual Damage and Scratches



✔ **4. Side:** Wheels - Condition



✔ **5. Side:** Body Panel Geometry



✔ **6. Front:** Hood - Visual Damage



✔ **7. Front:** Front Bumper - Condition and Alignment



✔ **8. Rear:** Trunk - Opening and Holding Mechanism



✔ **9. Rear:** Trunk - Visual Damage



Mechanical

✓ 1. OTHER: Charge Battery



✓ 2. OTHER: Engine Oil & Filter Change

✓ 3. ENGINE: Mounting - Left (of Engine Bay)

✓ 4. ENGINE: Mounting - Right (of Engine Bay)

✓ 5. AUTOMATIC TRANSMISSION: Oil Pan and Gasket



Other

✓ 1. Brake Test Line Results



✔ 2. Diagnostic Photo



✔ 3. Air-Conditioning Measurement



✔ 4. Add Photo of Front Interior



Preparation and repair report of 2014 BMW 525 Luxury Line



Summary of work performed in Longo Preparation center

During the preparation process, the following works were performed

Body & Interior

- ✓ 1. Repair Spoiler
- ✓ 2. Correct Body Panel Geometry

Paintshop

- ✓ 1. Paint Door
- ✓ 2. Paint Rear Fender

Cleaning & polishing

- ✓ 1. Body wet wash
- ✓ 2. Full interior deep clean using only hypoallergenic cleaning products
- ✓ 3. Post cleaning body polish

Spare parts used during preparation

- 1. Oil Filter (OE672/4)
- 2. Engine Mount (CO80004448)
- 3. Engine Mount (CO80004460)
- 4. Rear Right Door F10 (GTV402)

Disclaimer

This report has been generated automatically using the information available in our systems and may not be fully comprehensive or complete. Automated translation technology was used in its preparation, and as a result, minor inaccuracies may occur. If you have any questions or if any part of the report is unclear, please do not hesitate to contact our sales team. They will be happy to assist you.

Additional information about 2014 BMW 525 Luxury Line



Additional pictures



















Longo 150-point checklist

Every vehicle is carefully examined according to Longo's comprehensive 150-point checklist, ensuring a thorough assessment mechanical condition. Depending on the factors such as condition, mileage, and specifications, additional checks may be included or omitted.



Vehicle Identity & History

Vehicle identification number (VIN) verified	Registration number confirmed	Mileage verified
Year of manufacture confirmed	First registration date confirmed	Service history checked
Last service date and mileage recorded	Next service due date recorded	Previous accident damage check performed
Manufacturer recall status checked	Vehicle documents verified	Number of keys checked

Exterior Condition

Front bumper inspected	Rear bumper inspected	Bonnet/hood inspected
Roof inspected	Left side panels inspected	Right side panels inspected
All doors inspected	Boot/trunk inspected	Fuel filler cover inspected
Tow bar (if fitted) inspected	Number plate condition confirmed	Paintwork overall checked
Rust or corrosion checked	Gaps between panels checked	Windscreen inspected
Rear window inspected	Side windows inspected	Sunroof/panoramic roof inspected

Interior Condition

Driver's seat condition checked	Passenger seats checked	Rear seats checked
Seat adjustment mechanisms tested	Seat heating/cooling tested (if fitted)	Seatbelts checked
Carpets inspected	Floor mats inspected	Headlining inspected
Interior trims inspected	Dashboard inspected	Door trims inspected
Armrest inspected	Parcel shelf inspected	Luggage area condition checked
Luggage area carpets checked	Luggage area lighting tested	Spare wheel / repair kit checked

Lights, Mirrors & Glass

Front headlights tested	High beam tested	Fog lights tested
Daytime running lights tested	Rear lights tested	Brake lights tested
Reverse lights tested	Indicators tested	Number plate lights tested
Side markers/reflex reflectors checked	Interior lights tested	Dashboard warning lights checked
Sun visors inspected	Interior mirror inspected	Exterior mirrors inspected
Electric mirror adjustment tested		

Comfort & Electronics

Air conditioning tested	Heating system tested	Ventilation system tested
Window heating tested (front/rear)	Power windows tested	Central locking tested
Remote key tested	Child lock tested	Infotainment screen tested
Radio tested	Navigation tested (if fitted)	Bluetooth connection tested
USB/12V sockets tested	Parking sensors tested	Rear view camera tested
Parking assistance systems tested	Cruise control tested	Steering wheel buttons tested
Horn tested	Electronic driver aids checked (lane assist, etc., if fitted)	

Safety Equipment

Airbags checked via system	Passenger airbag switch checked	ABS warning light checked
ESC/traction control checked	Tyre pressure monitoring system tested	Fire extinguisher/first aid kit present (if supplied)

Engine Bay & Fluids

Engine starts normally	Engine idles smoothly	Unusual engine noises checked
Engine mounts checked	Drive belts checked	Timing belt/chain condition checked
Battery condition tested	Battery charging tested	Alternator performance tested
Fluid leaks checked	Engine oil level checked	Engine oil quality checked
Coolant level checked	Coolant quality checked	Brake fluid level checked
Brake fluid quality tested	Power steering fluid level checked	Power steering fluid quality checked
Windscreen washer fluid filled	Fuel system checked for leaks	

Braking System

Front brake discs checked	Rear brake discs checked	Brake pads checked
Brake hoses checked	Brake lines checked	Parking brake tested
Brake pedal response tested	ABS function confirmed	

Steering & Suspension

Steering wheel alignment checked	Steering response tested	No excessive steering play confirmed
Power steering assistance tested	Front suspension inspected	Rear suspension inspected
Shock absorbers inspected	Springs inspected	Ball joints inspected
Wheel bearings checked		

Wheels & Tyres

Front tyres tread depth measured	Rear tyres tread depth measured	Tyre wear pattern checked
Tyre sidewalls inspected	Tyre pressures checked	Spare tyre condition checked
Alloy wheels checked for damage	Wheel nuts/bolts secure	Locking wheel nut present
Additional tyre set inspected (if included)		

Exhaust & Fuel System

Exhaust condition checked	Exhaust leaks checked	Catalytic converter present
Diesel particulate filter present (if fitted)	Fuel tank condition checked	Fuel lines inspected
Fuel filler cap tested		

Road Test & Driving Performance

Smooth acceleration confirmed	Smooth gear shifting confirmed	Clutch operation tested
Braking performance tested	Driving stability confirmed	